

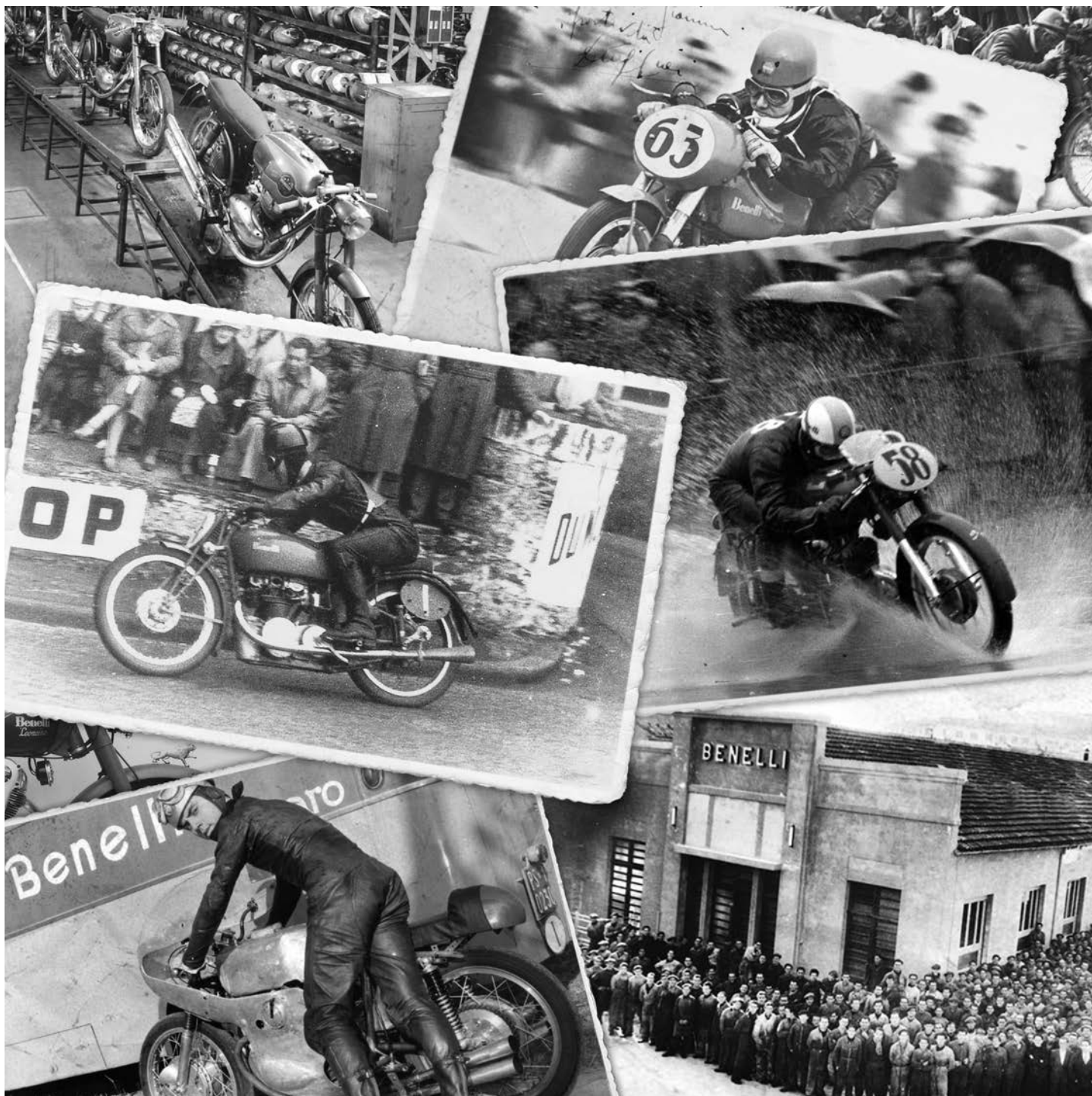


 PURE PASSION SINCE 1911 



## PESARO, ITALY - 1911

*As often happens, the history of great industries is born in garages. In our case this is the "Benelli Garage" where in 1911 the six Benelli brothers Giuseppe, Giovanni, Francesco, Filippo, Domenico and Tonino repaired and manufactured motorcycles parts. In 1921 the 'Velomotore' was created: from that time starts a long list of moments of glory for Benelli, with over 1000 victories in the Italian and European motorcycle races and two victories in the world championship, in 1950 and 1969. Many legendary riders have ridden Benelli motorcycles, Tonino Benelli, Ambrosini, Saarinen, Hailwood and Carruthers amongst others. At the end of the 1960's the last motorcycle of the family owned company was born: the Tornado 650. From the 1970's until the early 2000's there were some changes in ownership, leading to the development of new and extraordinary models that have become symbols of Benelli's history. These include the famous six-cylinder 750cc and 900cc, a series of modern scooters, and at the start of the new millennium the production of the Tornado superbike range, Tornado Naked Tre and Tre-k models. These new models ensured that Benelli was truly back in the market for large capacity sports motorcycles. Since 2005 Benelli is part of the QJ Motorcycle group, a corporation that produces more than one million two-wheeled vehicles every year. Benelli of today offers a wide range of modern and cutting edge products that respect the passion and tradition that has always guided this historic Italian brand.*



# 502C LAMS CRUISER

2020 & 2019

bikesales

BIKE OF  
THE YEAR

CRUISER LAMS



MATT BLACK



COGNAC RED



GLOSS BLACK

The multi award winning, **502C** Cruiser is designed for those who want to stand out from the crowd. With advanced footpegs as is traditional for custom bikes, a comfortable and spacious seat, and contemporary and stylish design, test ride today and find out why the Benelli **502C** Cruiser is the back-to-back-to-back winner of the Bikesales Bike of the Year Award for Best Lams Cruiser.





ENGINE	
TYPE	In line 2 cylinders, 4 stroke, liquid cooled, 4 valves for cylinder double overhead camshaft
DISPLACEMENT	500 c.c.
BORE X STROKE	69 x 66,8 mm
RATED OUTPUT	35 kW / 8500 rpm
MAX TORQUE	45 Nm / 5000 rpm
CERTIFICATION	Euro 4 - CO2 emissions: 96 g/km - Fuel consumption: 4,2 lt/100 km
CLUTCH	Multidisc wet clutch
GEAR BOX	6 speeds
CHASSIS	
FRAME	Trellis steel tubes and plates
FRONT SUSPENSION	Upside-down forks ø 41mm
FRONT SUSPENSION STROKE	125 mm
REAR SUSPENSION	Rear swing arm with central shock absorber spring preload adjustable
REAR SUSPENSION STROKE	50 mm
FRONT BRAKE	Double semi floating disc ø 280 mm with 4 pistons caliper and ABS
REAR BRAKE	Single disc ø 240 mm with single piston floating caliper and ABS
FRONT TYRE	120/70 - ZR17" M/C 58W
REAR TYRE	160/60 - ZR17" M/C 69W
DIMENSIONS	
PILOT SEAT HEIGHT	750 mm
WHEELBASE	1600 mm
WEIGHT	217 kg
USABLE TANK VOLUME	21 lt
LENGTH / WIDTH/ HEIGHT	2280 mm / 940 mm / 1140 mm

Benelli reserves the right to change technical specification, equipment, set up and colours without prior notice.

# 752 S

## FULL POWER

### NAKED



GREEN



WHITE



BLACK



RED

Featuring a modern design with sporty and fascinating lines, **752S** is a naked bike capable of captivating at first glance. The tube trellis frame with steel plates envelops the new Benelli full-powered four-stroke 750cc, twin-cylinder engine, coupled with high profile components such as Marzocchi, Brembo and Pirelli, the all new Benelli **752S** Naked will ensure absolute fun on the road.





ENGINE	
TYPE	In line 2 cylinders, 4 stroke, liquid cooled, 4 valves for cylinder double overhead camshaft (DOHC)
DISPLACEMENT	754 c.c.
BORE X STROKE	88 x 62 mm
RATED OUTPUT	56 kW (76,8 Cv) @ 8500 rpm
MAX TORQUE	67 Nm (6,8 Nm) @ 6500 rpm
CERTIFICATION	Euro 4 - CO2 emissions 110 g/km - Fuel consumption 5,0 lt/100 km
CLUTCH	Multidisc wet clutch
GEAR BOX	6 speeds
CHASSIS	
FRAME	Trellis steel tubes and plates
FRONT SUSPENSION	Upside-down Marzocchi forks ø 50 mm
FRONT SUSPENSION STROKE	130 mm
REAR SUSPENSION	Rear swing arm with central KYB shock absorber spring preload adjustable
REAR SUSPENSION STROKE	60 mm
FRONT BRAKE	Brembo Twin semi floating ø 320 mm with 4 pistons caliper ABS
REAR BRAKE	Brembo Single ø 260 mm with single piston floating caliper ABS
FRONT TYRE	Pirelli Angel ST 120/70 - ZR17"
REAR TYRE	Pirelli Angel ST 180/55 - ZR17"
DIMENSIONS	
PILOT SEAT HEIGHT	810 mm
WHEELBASE	1460 mm
WEIGHT	220kg
USABLE TANK VOLUME	14,5 lt
LENGTH / WIDTH/ HEIGHT	2130 mm / 820 mm / 1100 mm

Benelli reserves the right to change technical specification, equipment, set up and colours without prior notice.







# **EXPLORE YOUR DREAMS, DISCOVER YOUR PASSION**

*Jump aboard Benelli's adventure-oriented TRK 502 or TRK 502X and the road is your ticket to freedom. You will soon see why it was Italy's best selling motorcycle in 2020. You can turn each day into a different adventure, discover new worlds, all without any limitations.*

# TRK 502 X

## LAMS

ADVENTURE SPORT



GREY



WHITE



RED



BLUE

The adventure in your hands. TRK 502 has an attractive appearance that has been enhanced to create the aggressively styled adventure version of Benelli's 500 c.c. crossover, **TRK 502 X**. Designed to meet the needs of the most demanding riders who wish to travel without boundaries. Book a test ride at your nearest Benelli dealer and discover why it was Italy's best selling motorcycle for 2020.





ENGINE	
TYPE	In line 2 cylinders, 4 stroke, liquid cooled, 4 valves for cylinder double overhead camshaft (DOHC)
DISPLACEMENT	500 c.c.
BORE X STROKE	69 x 66,8 mm
RATED OUTPUT	35 kW (47,6 Cv) @ 8500 rpm
MAX TORQUE	45 Nm (4,6 kgm) @ 5000 rpm
CERTIFICATION	Euro 4 - CO2 emissions: 87 g/km - Fuel consumption: 3,8 lt/100 km
CLUTCH	Multidisc wet clutch
GEAR BOX	6 speeds
CHASSIS	
FRAME	Trellis steel tubes and plates
FRONT SUSPENSION	Upside-down forks ø 50mm
FRONT SUSPENSION STROKE	145 mm
REAR SUSPENSION	Rear swing arm with central shock absorber, spring preload, hydraulic rebound and compression setting adjustable
REAR SUSPENSION STROKE	50 mm
FRONT BRAKE	Double disc ø 320 mm with floating 2 pistons caliper and ABS
REAR BRAKE	Single disc ø 260 mm with single piston floating caliper and ABS
FRONT TYRE	110/80 - R19" - M/C 59V
REAR TYRE	150/70 - R17" - M/C 69V
DIMENSIONS	
PILOT SEAT HEIGHT	840 mm
WHEELBASE	1525 mm
WEIGHT	213 kg
USABLE TANK VOLUME	20 lt
LENGTH / WIDTH/ HEIGHT	2220 mm / 915 mm / 1480 mm

Benelli reserves the right to change technical specification, equipment, set up and colours without prior notice.

# TRK 502

## LAMS

ADVENTURE SPORT

2020, 2019, 2018



bikesales

BIKE OF  
THE YEAR

ADVENTURE SPORT  
LAMS



WHITE



GREY



RED



BLUE

With a design that draws upon the regarded adventure motorcycle for inspiration, the all new **TRK 502** is a touring motorcycle that is versatile and provides long distance trips in a fresh and inspiring manner. The **TRK 502** provides the ability to turn each day into a different adventure, discover new worlds and discover why it won Australia's "Bike Sales - Bike of the Year" 3 years in row.



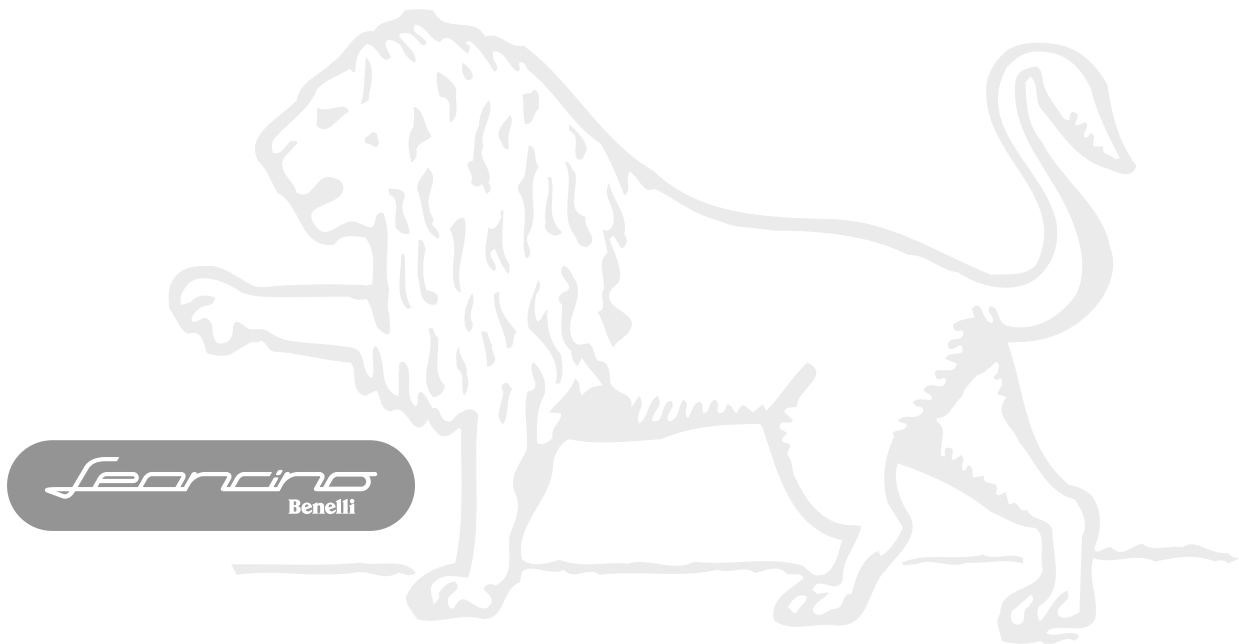


ENGINE	
TYPE	In line 2 cylinders, 4 stroke, liquid cooled, 4 valves for cylinder double overhead camshaft
DISPLACEMENT	500 c.c.
BORE X STROKE	69 x 66,8 mm
RATED OUTPUT	35 kW (47,6 Cv) @ 8500 rpm
MAX TORQUE	46 Nm (4,6 kgm) @ 6000 rpm
CERTIFICATION	Euro 4 - CO2 emissions: 91 g/km - Fuel consumption: 3,9 lt/100 km
CLUTCH	Multidisc wet clutch
GEAR BOX	6 speeds
CHASSIS	
FRAME	Trellis steel tubes and plates
FRONT SUSPENSION	Upside-down forks Ø 50mm
FRONT SUSPENSION STROKE	145 mm
REAR SUSPENSION	Rear swing arm with central shock absorber spring preload adjustable
REAR SUSPENSION STROKE	45 mm
FRONT BRAKE	Twin semi floating disc Ø 320 mm with 4 pistons caliper and ABS
REAR BRAKE	Single disc Ø 260 mm with single piston floating caliper and ABS
FRONT TYRE	120/70 - ZR17" M/C 58W
REAR TYRE	160/60 - ZR17" M/C 69W
DIMENSIONS	
PILOT SEAT HEIGHT	800 mm
WHEELBASE	1525 mm
WEIGHT	210 kg
USABLE TANK VOLUME	20 lt
LENGTH / WIDTH/ HEIGHT	2200 mm / 915 mm / 1450 mm

Benelli reserves the right to change technical specification, equipment, set up and colours without prior notice.

# TIMELESS DESIRE

*Sporting the "Lion of Pesaro" on the front fender, Leoncino represents an authentic and pure hearted design concept that rediscovers the style and accessibility of the original, all while delivering a contemporary motorcycle that provides a sporty and exciting experience.*







# LEONCINO 500

## LAMS

ROAD



RED



GREY



BLACK

**Leoncino** combines tradition, myth and passion with contemporary style, innovation and performance. A tribute to a legend of Italian motorcycling that today finds its identity in the modern world and in a street bike, elegant, fast and compact.





ENGINE	
TYPE	In line 2 cylinders, 4 stroke, liquid cooled, double overhead camshaft, 4 valves for cylinder
DISPLACEMENT	500 c.c.
BORE X STROKE	69 x 66,8 mm
RATED OUTPUT	35 kW (47,6 Cv) @ 8500 rpm
MAX TORQUE	46 Nm (4,6 kgm) @ 6000 rpm
CERTIFICATION	Euro 4 - CO2 emissions: 100 g/km - Fuel consumption: 4,3 lt/100 km
CLUTCH	Wet clutch
GEAR BOX	6 speeds
CHASSIS	
FRAME	Frame in steel tubes
FRONT SUSPENSION	Upside-down forks ø 50mm with rebound brake adjustable
FRONT SUSPENSION STROKE	125 mm
REAR SUSPENSION	Rear swing arm with lateral shock absorber with spring preload adjustment and hydraulic rebound brake adjustable
REAR SUSPENSION STROKE	51 mm (128 mm rear wheel travel)
FRONT BRAKE	Twin semi floating disc ø 320 mm with 4 piston radial caliper and ABS
REAR BRAKE	Single disc ø 260 mm with single piston floating caliper and ABS
FRONT TYRE	120/70 - ZR17" - M/C 58W
REAR TYRE	160/60 - ZR17" - M/C 69H
DIMENSIONS	
PILOT SEAT HEIGHT	815 mm
WHEELBASE	1460 mm
WEIGHT	170 kg
USABLE TANK VOLUME	12,7 lt
LENGTH / WIDTH/ HEIGHT	2160 mm / 875 mm / 1160 mm

Benelli reserves the right to change technical specification, equipment, set up and colours without prior notice.



# LEONCINO 500 TRAIL

## LAMS

### TRAIL



GREY



RED



BLACK

**Leoncino Trail** is a dynamic and sporty all-terrain motorcycle. Leoncino uses the latest Benelli 500 c.c. twin cylinder engine and has 19" front and 17" rear spoked aluminium wheels to complete the scrambler look. A bike designed for pure fun in all riding conditions.



ENGINE	
TYPE	In line 2 cylinders, 4 stroke, liquid cooled, double overhead camshaft, 4 valves for cylinder
DISPLACEMENT	500 c.c.
BORE X STROKE	69 x 66,8 mm
RATED OUTPUT	35 kW (47,6 Cv) @ 8500 rpm
MAX TORQUE	46 Nm (4,6 kgm) @ 6000 rpm
CERTIFICATION	Euro 4 - CO2 emissions: 100 g/km - Fuel consumption: 4,3 lt/100 km
CLUTCH	Wet clutch
GEAR BOX	6 speeds
CHASSIS	
FRAME	Frame in steel tubes
FRONT SUSPENSION	Upside-down forks ø 50mm with rebound brake adjustable
FRONT SUSPENSION STROKE	135 mm
REAR SUSPENSION	Rear swing arm with lateral shock absorber with spring preload adjustment and hydraulic rebound brake adjustable
REAR SUSPENSION STROKE	55 mm (138 mm rear wheel travel)
FRONT BRAKE	Double disc ø 320 mm with floating 2 pistons caliper and ABS
REAR BRAKE	Single disc ø 260 mm with single piston floating caliper and ABS
FRONT TYRE	110/80 R19" M/C 59V M+S
REAR TYRE	150/70 R17" M/C 69V M+S
DIMENSIONS	
PILOT SEAT HEIGHT	825 mm
WHEELBASE	1470 mm
WEIGHT	170 kg
USABLE TANK VOLUME	12,7 lt
LENGTH / WIDTH/ HEIGHT	2180 mm / 875 mm / 1200 mm

Benelli reserves the right to change technical specification, equipment, set up and colours without prior notice.



# TNT 135

## LAMS

FUN



WHITE



BLACK



RED



LIME GREEN

The new **TNT 135** has been created to win the hearts of a user that demands the utmost from their equipment, whilst still providing an unparalleled, enjoyable experience.





#### ENGINE

TYPE	Single cylinder, 4 stroke, air-oil cooled 4 valves, single overhead camshaft (SOHC), double spark
DISPLACEMENT	135 c.c.
BORE X STROKE	54 x 58,8 mm
RATED OUTPUT	9,5 kW (13 hp) @ 9000 rpm
MAX TORQUE	10,8 Nm (1,0 kgm) @ 7000 rpm
CERTIFICATION	Euro 4 - CO2 emissions: 52 g/km - Fuel consumption: 2,2 lt/100 km
CLUTCH	Wet clutch
GEAR BOX	5 speeds

#### CHASSIS

FRAME	Trellis in steel tubes
FRONT SUSPENSION	Upside-down forks ø 35mm
FRONT SUSPENSION STROKE	120 mm
REAR SUSPENSION	Rear swing arm with lateral shock absorber with spring pre-load adjustment
REAR SUSPENSION STROKE	50 mm
FRONT BRAKE	Steel disc ø 210 mm with 3 pistons caliper and CBS
REAR BRAKE	Single disc ø 190 mm with single piston caliper and CBS
FRONT TYRE	120/70 - ZR12"
REAR TYRE	130/70 - ZR12"

#### DIMENSIONS

PILOT SEAT HEIGHT	780 mm
WHEELBASE	1215 mm
WEIGHT	121 kg
USABLE TANK VOLUME	7,2 lt
LENGTH / WIDTH / HEIGHT	1770 mm / 760 mm / 1025 mm

Benelli reserves the right to change technical specification, equipment, set up and colours without prior notice.





# GENUINE ACCESSORIES



*There is a great range of premium quality motorcycle clothing & accessories available for your new Benelli motorcycle. Accessorise with crash protection, luggage, sticker kits, even ergonomic accessories like handlebar risers, footpegs and bar end mirrors. Choose a great Benelli branded helmet, jacket or gloves and much much more. Visit our website or talk to your nearest Benelli motorcycle dealership.*





**Benelli**



**[www.benelli.com.au](http://www.benelli.com.au)**  
**[www.benellimotorcycles.co.nz](http://www.benellimotorcycles.co.nz)**

Book a test ride, apply for finance or simply order online today.